



PPPL Standards

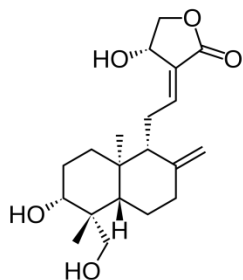
Kalmegh (*Andrographis paniculata*)

Common name: *The creat, Kariyat, English: The creat, Kariyat, Marathi: kalamegha, Sanskrit: Bhunimba*

Gujarati: *kariyatu, Hindi: hara chirayata*

Part used: *Leaves and stem -Kariyat is an erect annual herb extremely bitter in taste in all parts of the plant. It grows erect to a height of 1-4 ft in moist shady places with smooth leaves and white flowers with rose-purple spots on the petals. Stem dark green, 0.3 - 1.0 m in height, 2-6 mm in diameter,*

Active Chemical constituents: *andrographaloid*



andrographaloid

Organoleptic characters:

Colour-Greenish

Odour- not specific

Taste- Bitter

Pharmacological applications: *anti-inflammatory, antibacterial, antitumor, antidiabetic, antimalarial, and hepatoprotective, Kills intestinal worms & support intestine, Anti-acne: Protect skin from pimples.*

Granthokta Ayurvedic application: *diabetes, high blood pressure, ulcer, leprosy, bronchitis, skin diseases, flatulence, colic, influenza, dysentery, dyspepsia and malaria, infectious disease, fever-causing diseases, colic pain, loss of appetite, irregular stools and diarrhea*



PAT PHARMACEUTICALS PVT. LTD.

Yashomangal, Near Old Post Office, Dr. Patwardhan Road,
PANVEL, Dist. Raigad, Maharashtra, 410206.

E mail id: - patpharmapvtltd@gmail.com; Customer Care No. 022-27456039.

PAT PHARMACEUTICALS PVT. LTD.

Yashomangal, Near Old Post Office, Dr. Patwardhan Road,
PANVEL, Dist. Raigad, Maharashtra, 410206.

E mail id: - patpharmapvtltd@gmail.com; Customer Care No. 022-
27456039.